

**LG**

Life's Good

LEVELING LEG INSTALLATION INSTRUCTIONS



WARNING

Disconnect all power to unit to avoid possible electrical shock during installation.

Leveling Leg Accessory Kits include two leveling legs as well as two mounting screws. They are constructed of formed sheet metal and are engineered to provide accurate leveling and support for PTAC units which don't utilize the optional subbase. They are adjustable from 3 1/4" to 5 1/2". See Figure 1.

Step 1 — Locate Leveling Legs flush with The front of the Wall Sleeve. See Figure 2.

Step 2 — Using the Leveling Leg as a template, drill a 1/8" diameter hole for each leg in opposite sides of the Wall Sleeve.

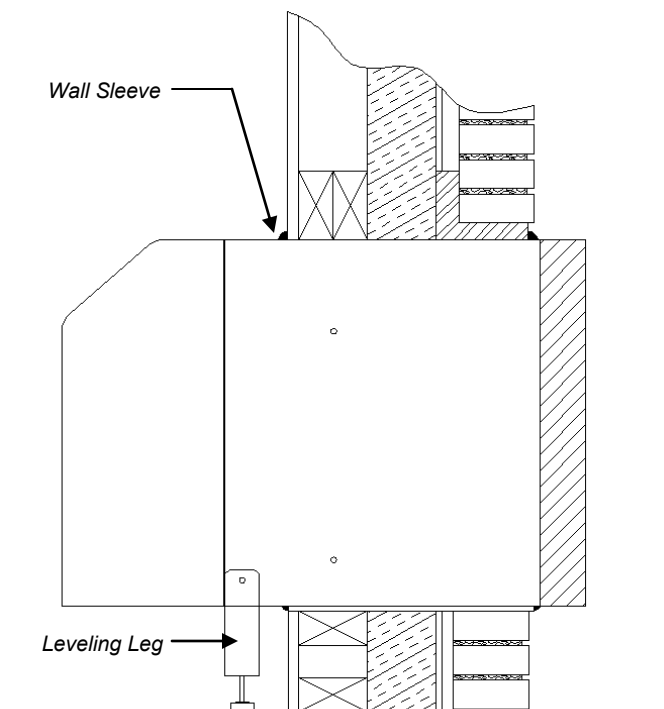
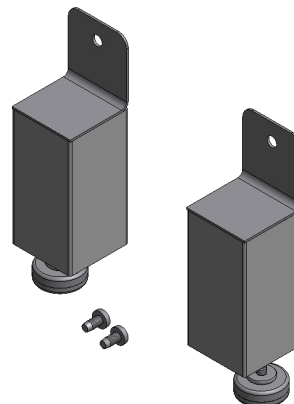
Step 3 — Adjust Leveling Legs to the approximate height required and install them with the screws provided. Do not over tighten screws.

Step 4 — Level the Wall Sleeve horizontally from side-to-side. Then provide a slight slope (1/4 bubble in the sight glass) toward the exterior of the building. **Do not allow sleeve to slope toward the room.**

Step 5 — Install PTAC unit. **Check again to make sure sleeve is still sloping toward the outside.** Adjust Leveling Legs as needed to ensure slope as explained in **Step 4**. Connect power to the unit.

IMPORTANT: Installer is responsible for complying with all building and National Electrical Codes.

**FIGURE 1 —
Leveling Leg
Accessory Kit**



**FIGURE 2 —
Leveling Leg
Installed on Wall Sleeve**

Made in USA