

OWNER'S & INSTALLATION MANUAL AIR CONDITIONER

TYPE : Wired Remote Controller

Copyright © 2021 LG Electronics Inc. All Rights Reserved.

MFL69191737
Rev.00_110521

TIPS FOR SAVING ENERGY

Here are some tips that will help you minimize power consumption when you use the air conditioner. You can use your air conditioner more efficiently by referring to the instructions below:

- Do not cool excessively indoors. This may be harmful for your health and may consume more electricity.
- Block sunlight with blinds or curtains while you are operating the air conditioner.
- Keep doors or windows closed tightly while you are operating the air conditioner.
- Adjust the direction of the air flow vertically or horizontally to circulate indoor air.
- Speed up the fan to cool or warm indoor air quickly.
- Open windows regularly for ventilation as the indoor air quality may deteriorate if the air conditioner is used for many hours.
- Clean the air filter once every 2 weeks. Dust and impurities collected in the air filter may block the air flow or weaken the cooling / dehumidifying functions.

For your records

Staple your receipt to this page in case you need it to prove the date of purchase or for warranty purposes. Write the model number and the serial number here:

Model number : _____

Serial number : _____

You can find them on a label on the side of each unit.

Dealer's name : _____

Date of purchase : _____

IMPORTANT SAFETY INSTRUCTIONS

READ ALL INSTRUCTIONS BEFORE USING THE APPLIANCE.

Always comply with the following precautions to avoid dangerous situations and ensure peak performance of your product.

! WARNING

This symbol indicates potentially hazardous situation which, if not avoided could result in death or serious injury.

! CAUTION

This symbol indicates a potentially hazardous situation which, if not avoided, may result in minor or moderate injury.

! WARNING**Installation**

- For electrical work, contact the dealer, seller, a qualified electrician, or an authorized service Center.
- Do not disassemble or repair the product. There is risk of fire, electric shock, explosion, equipment malfunction, or injury.
- Request to the service center or installation specialty store when reinstalling the installed product.
- There is risk of fire, electric shock, explosion, equipment malfunction, or injury.
- Do not disassemble, fix, and modify products randomly.
- There is risk of fire, electric shock, explosion, equipment malfunction, or injury.
- The product shall be installed according to the national standards and local code.
- Apply totally enclosed noncombustible conduit in case of local building code requiring plenum.
- Use appropriate unit mounting procedures.
- Avoid direct sunlight.
- Avoid moist areas.

In-Use

- Do not place flammable objects close to the product.
- There is risk of fire, electric shock, explosion, equipment malfunction or injury.
- Do not allow product to get wet.
- There is risk of fire, electric shock, explosion, equipment malfunction or injury.
- Avoid dropping the product.
- There is risk of fire, electric shock, explosion, equipment malfunction or injury.
- If product gets wet, contact your dealer or authorized service center.
- There is risk of fire, electric shock, explosion, equipment malfunction, or injury. If the instructions are not followed, it may cause death or severe injury of the user.
- Do not use sharp or pointed objects on product.
- There is risk of fire, electric shock, explosion, equipment malfunction or injury.
- Do not touch or pull the lead wire with wet hands.
- There is risk of product breakdown or electric shock.

! CAUTION**Installation**

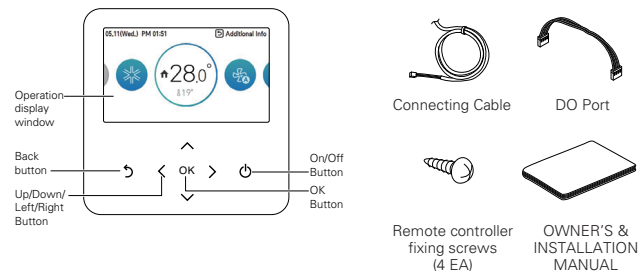
- If anyone other than a licensed Professional installs, repairs, or alters LG Electronics Air Conditioning Products, the warranty is voided.
- All costs associated with repair are then the full responsibility of the owner.

- Do not install the unit in potentially explosive atmospheres.

In-use

- Do not clean using powerful detergents like solvent but use soft cloths.
- There is risk of fire, electric shock, explosion, equipment malfunction or deformation.
- Do not press the screen using powerful pressure.
- There is risk of product break-down or malfunction.

DESCRIPTION

WIRED REMOTE CONTROLLER**Accessories**

Operation display window	Operation and Settings status display
Back button	When you move to the previous stage from the menu's setting stage
Up/down/left/right button	When you change the menu's setting value
OK button	When you save the menu's setting value
On/Off button	When you turn ON/OFF the air conditioner

Operation

You can easily control the desired operation mode and set the settings.

* Some functions may not be available in some product types.

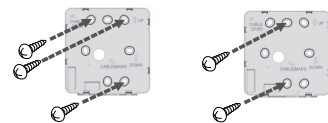
Function	Display & Icon	Description
Operation Mode		You can easily control the desired operation mode
Temperature setting		You can easily control to the desired temperature and check the current indoor temperature.
Fan Speed		You can easily control the desired fan speed.
Air Flow		You can easily control the desired air flow. - It circulates in the order of Off → Up/Down swing → Left/Right swing → Up/Down/Left/Right swing → Swirl → Indirect wind → Direct wind → Human detection direct wind → Smart mode → Refresh mode → Airflow based on activity → Airflow for frequently used areas.
Setting		Various settings can be set for functions, users and services.
Monitoring Screen		<Status of fine dust> • The composite indicator displays the worst dust condition value among the three dust condition values. • The remaining filter cleaning time is for reference only, and the actual filter condition may differ depending on the installation environment and usage conditions.
Interface screen (when Air conditioner and ventilation is interlocked.)		When connecting air conditioner/ventilation, you can check product information at the same time. Set after selecting air conditioner or ventilation with the left and right buttons.

* For detailed instructions, you can check the LG website or smart device.

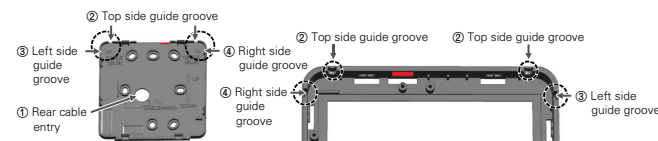
INSTALLATION

Installation of Remote Controller

- After fixing the remote controller installation plate on the desired location, fix it firmly with the provided screws.
- If the installation plate is not flat on the surface, it may result in the controller being twisted and cause a defect.



- The wired remote controller cable can be installed in 4 directions. Install to the suitable direction according to the installation environment.
- Installation direction: Rear entry, top side, right side, left side.



- When installing the remote control cable on the left side, be sure to install it in the following guide.

 1. Make the cable to "ㄣ" shape as shown below.
 2. Fit the bent "ㄣ" cable into the upper center piece of case.
 3. Tighten the installation plate with preventing interference with the surrounding guide structure.

* If the cable is assembled in a shape other than "ㄣ", it may not be fastened to the installation plate due to interference with the structure of case.

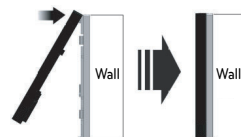


Reference. the bent cable shape



The Upper center boss for fixing the bent cable

- After fixing the remote controller top side on the installation plate attached to the wall as in the following figure, press the bottom side to combine with the installation plate.
- Do not leave a gap
- Before combining with the installation plate, arrange the cables to avoid interference with the circuit parts.

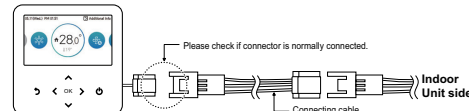
<Order of Combining>

- When you remove the remote controller from the installation plate, insert a small flat head screwdriver into the bottom side separation hole and turn clockwise to separate the remote controller.
- Be careful not to damage the internal parts during the removal.

<Order of Separation>

- Use the connection cables to connect the indoor unit with the remote controller.

DC 12 V	Red
Signal	Yellow
GND	Black



- For the following cases, separately purchase and use the cables suitable for the situation.
- If the distance between the wired remote controller and the indoor unit is 10 m (32 ft) or more : 10 m (32 ft) extension cable (model name: PZCWRC1)
- If you control several indoor unit products with one wired remote controller : Group control cable (model name: PZCWRCG3)

! NOTE

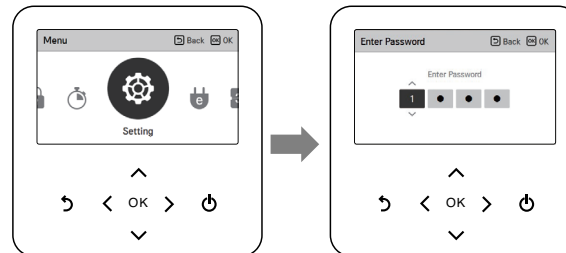
During the wired remote controller installation, do not bury it in the wall. (It may cause temperature sensor failure.)
Do not install the cable over 50 m (164 ft). (It may cause communication defect.)
Specification of extension cable: AWG 24, 3 conductor or above.

INSTALLER SETTING

How to enter installer setting**! CAUTION**

The installer setting mode is the mode to set the remote controller's detail function. If the installer setting mode is incorrectly set, it may cause product failure, user's injury, or property damage. It must be set by the installation specialist with the installation license, and if it is installed or changed without installation license, all problems caused will be the responsibility of the installer, and may void the LG warranty.

- In the menu screen, press [←,→(left/right)] button to select the setting category, and press [↵(up)] button for 3 seconds to enter the password input screen for the installer setting.
- Input the password and press [OK] button to move to the installer setting list.



* Installer setting password

Main screen → menu → setting → service → RMC version information → SW Version

Example) SW version : 1.00.1 a

In the above case, the password is 1001.

! NOTE

Some categories of the installer setting menu may not be available depending on the product function or the menu name may be different.

Open Source Software Notice Information

To obtain the source code under GPL, LGPL, MPL, and other open source licenses that have the obligations to disclose source code, that is contained in this product, and to access all referred license terms, copyright notices and other relevant documents please visit <https://opensource.lge.com>.

LG Electronics will also provide open source code to you on CD-ROM for a charge covering the cost of performing such distribution (such as the cost of media, shipping, and handling) upon email request to opensource@lge.com.

This offer is valid to anyone in receipt of this information for a period of three years after our last shipment of this product.