

WattNode® Meter and Current Transducer Selection Matrix

How to Order and Install WattNode® Pulse Meters and CTs

Rev. August 2021

Request a quote:

LG Electronics VRF heat pump systems equipped with the Power Distribution Indicator (PDI) for energy monitoring applications use a specially configured Continental Control Systems (CCS) WattNode® Pulse energy meter and current transformers (CTs). Each three phase Outdoor Unit (ODU) needs one meter and three CTs. Single phase ODUs only need two CTs.

Because the meter part numbers are so long, CCS suggest the following procedure: In the following tables, locate the row with the outdoor unit part number that you want to meter. Select the entire row and copy and paste into an email. The Tons, MCA, and Voltage-PH values are not needed and can be deleted if you wish. Add the total quantity of the ODU part number needed for the job. Each ODU needs one meter and three CTs (two for single phase units).

Note: WattNode® meters must be ordered with the complete part number listed for each ODU model number.

Example: "WNB-3D-xxx-P Opt DPO,Kh=10,CT=xx,PW=75,SSR". Red text options are **REQUIRED!**

Please send your request for quote to the CCS Sales Team at sales@ctlsys.com. Copying and pasting text, rather than an image, makes order entry easier and reduces the possibly of typos.

Installation:

Depending on the ODU model number, an LG VRF heat pump chassis may contain one, two, or three condensers. ODU models with a single condenser are fed from a breaker with a rated current equal to or less than the Maximum Overcurrent Protection (MOP) amps given in the specifications. CTs are installed on the phase conductors near the breaker with the label facing the breaker.

ODU models with two or three condensers are typically fed from individual breakers with rated currents suitable for each condenser. Install these breakers next to each other on either the left or right side of the breaker panel. Run all the individual A phase conductors through the A phase CT, all the the B phase conductors through the B phase CT, and likewise for the C phase.

IMPORTANT! CTs must be installed with labels facing the breaker on the same phase conductor as the voltage input.

Meters are typically installed in an enclosure located next to the breaker panel. Current Transducer (CT) lead wires are eight feet long, which is usually long enough but they can be extended. Install a 15A or 20A three pole breaker in the panel to supply power to all the meters. Connect each meter's pulse output terminals P1 and Com to the PDI, using a #18 AWG or smaller shielded twisted pair cable. Configure the LG PDI device to an input value of 10 watts per pulse.

For more information on WattNode® Pulse meters and CTs, visit the Continental Control Systems website at www.ctlsys.com. For technical support email support@ctlsys.com

For Multi V and Multi V S LG RED Series 5 Heat Recovery/Heat Pump Air source Outdoor Units						
Tons	ODU Numbers	MCA	Voltage-PH	WattNode® Meter Model (QTY 1)	CT Part Number	CT QTY
3	ARUM036GSS5	23.5	208 1Ø	WNB-3D-240-P Opt DPO,Kh=10,CT=50,PW=75,SSR	ACTL-0750-050	2
4	ARUM048GSS5	24				
6	ARUN072BSS5	24.4	208 3Ø	WNB-3D-240-P Opt DPO,Kh=10,CT=50,PW=75,SSR	ACTL-0750-050	3
8	ARUN096BSS5	25.7	208 3Ø	WNB-3D-240-P Opt DPO,Kh=10,CT=50,PW=75,SSR	ACTL-0750-050	
6	ARUM072BTE5	22.6	208 3Ø	WNB-3D-240-P Opt DPO,Kh=10,CT=50,PW=75,SSR	ACTL-0750-050	3
6	ARUM072DTE5	12.8	460 3Ø	WNB-3D-480-P Opt DPO,Kh=10,CT=50,PW=75,SSR	ACTL-0750-050	
8	ARUM096BTE5	28.5	208 3Ø	WNB-3D-240-P Opt DPO,Kh=10,CT=50,PW=75,SSR	ACTL-0750-050	
8	ARUM096DTE5	16.4	460 3Ø	WNB-3D-480-P Opt DPO,Kh=10,CT=50,PW=75,SSR	ACTL-0750-050	
10	ARUM121BTE5	30.9	208 3Ø	WNB-3D-240-P Opt DPO,Kh=10,CT=50,PW=75,SSR	ACTL-0750-050	
10	ARUM121DTE5	18.4	460 3Ø	WNB-3D-480-P Opt DPO,Kh=10,CT=50,PW=75,SSR	ACTL-0750-050	
12	ARUM144BTE5	51.1	208 3Ø	WNB-3D-240-P Opt DPO,Kh=10,CT=100,PW=75,SSR	ACTL-0750-100	
12	ARUM144DTE5	26.4	460 3Ø	WNB-3D-480-P Opt DPO,Kh=10,CT=50,PW=75,SSR	ACTL-0750-050	
14	ARUM168BTE5	53.6	208 3Ø	WNB-3D-240-P Opt DPO,Kh=10,CT=100,PW=75,SSR	ACTL-0750-100	
14	ARUM168DTE5	28.5	460 3Ø	WNB-3D-480-P Opt DPO,Kh=10,CT=50,PW=75,SSR	ACTL-0750-050	
16	ARUM192BTE5	57.9	208 3Ø	WNB-3D-240-P Opt DPO,Kh=10,CT=100,PW=75,SSR	ACTL-0750-100	
16	ARUM192DTE5	35.7	460 3Ø	WNB-3D-480-P Opt DPO,Kh=10,CT=50,PW=75,SSR	ACTL-0750-050	
18	ARUM216BTE5	60.3	208 3Ø	WNB-3D-240-P Opt DPO,Kh=10,CT=100,PW=75,SSR	ACTL-0750-100	
18	ARUM216DTE5	38.3	460 3Ø	WNB-3D-480-P Opt DPO,Kh=10,CT=50,PW=75,SSR	ACTL-0750-050	
20	ARUM241BTE5	63.2	208 3Ø	WNB-3D-240-P Opt DPO,Kh=10,CT=100,PW=75,SSR	ACTL-0750-100	
20	ARUM241DTE5	41.1	460 3Ø	WNB-3D-480-P Opt DPO,Kh=10,CT=50,PW=75,SSR	ACTL-0750-050	
22	ARUM264BTE5	82.1	208 3Ø	WNB-3D-240-P Opt DPO,Kh=10,CT=100,PW=75,SSR	ACTL-0750-100	
22	ARUM264DTE5	44.9	460 3Ø	WNB-3D-480-P Opt DPO,Kh=10,CT=50,PW=75,SSR	ACTL-0750-050	
24	ARUM288BTE5	86.4	208 3Ø	WNB-3D-240-P Opt DPO,Kh=10,CT=100,PW=75,SSR	ACTL-0750-100	
24	ARUM288DTE5	52.1	460 3Ø	WNB-3D-480-P Opt DPO,Kh=10,CT=100,PW=75,SSR	ACTL-0750-100	
26	ARUM312BTE5	88.8	208 3Ø	WNB-3D-240-P Opt DPO,Kh=10,CT=100,PW=75,SSR	ACTL-0750-100	
26	ARUM312DTE5	54.7	460 3Ø	WNB-3D-480-P Opt DPO,Kh=10,CT=100,PW=75,SSR	ACTL-0750-100	
28	ARUM336BTE5	91.2	208 3Ø	WNB-3D-240-P Opt DPO,Kh=10,CT=100,PW=75,SSR	ACTL-0750-100	
28	ARUM336DTE5	56.7	460 3Ø	WNB-3D-480-P Opt DPO,Kh=10,CT=100,PW=75,SSR	ACTL-0750-100	
30	ARUM360BTE5	111.4	208 3Ø	WNB-3D-240-P Opt DPO,Kh=10,CT=150,PW=75,SSR	ACTL-0750-150	
30	ARUM360DTE5	64.7	460 3Ø	WNB-3D-480-P Opt DPO,Kh=10,CT=100,PW=75,SSR	ACTL-0750-100	
32	ARUM384BTE5	113.9	208 3Ø	WNB-3D-240-P Opt DPO,Kh=10,CT=150,PW=75,SSR	ACTL-0750-150	
32	ARUM384DTE5	66.8	460 3Ø	WNB-3D-480-P Opt DPO,Kh=10,CT=100,PW=75,SSR	ACTL-0750-100	
34	ARUM408BTE5	118.2	208 3Ø	WNB-3D-240-P Opt DPO,Kh=10,CT=150,PW=75,SSR	ACTL-0750-150	
34	ARUM408DTE5	74	460 3Ø	WNB-3D-480-P Opt DPO,Kh=10,CT=100,PW=75,SSR	ACTL-0750-100	
36	ARUM432BTE5	119.7	208 3Ø	WNB-3D-240-P Opt DPO,Kh=10,CT=150,PW=75,SSR	ACTL-0750-150	
36	ARUM432DTE5	72.5	460 3Ø	WNB-3D-480-P Opt DPO,Kh=10,CT=100,PW=75,SSR	ACTL-0750-100	
38	ARUM456BTE5	122.1	208 3Ø	WNB-3D-240-P Opt DPO,Kh=10,CT=150,PW=75,SSR	ACTL-0750-150	
38	ARUM456DTE5	75.1	460 3Ø	WNB-3D-480-P Opt DPO,Kh=10,CT=100,PW=75,SSR	ACTL-0750-100	
40	ARUM480BTE5	142.3	208 3Ø	WNB-3D-240-P Opt DPO,Kh=10,CT=150,PW=75,SSR	ACTL-0750-150	
40	ARUM480DTE5	83.1	460 3Ø	WNB-3D-480-P Opt DPO,Kh=10,CT=100,PW=75,SSR	ACTL-0750-100	
42	ARUM504BTE5	144.8	208 3Ø	WNB-3D-240-P Opt DPO,Kh=10,CT=150,PW=75,SSR	ACTL-0750-150	
42	ARUM504DTE5	85.2	460 3Ø	WNB-3D-480-P Opt DPO,Kh=10,CT=100,PW=75,SSR	ACTL-0750-100	

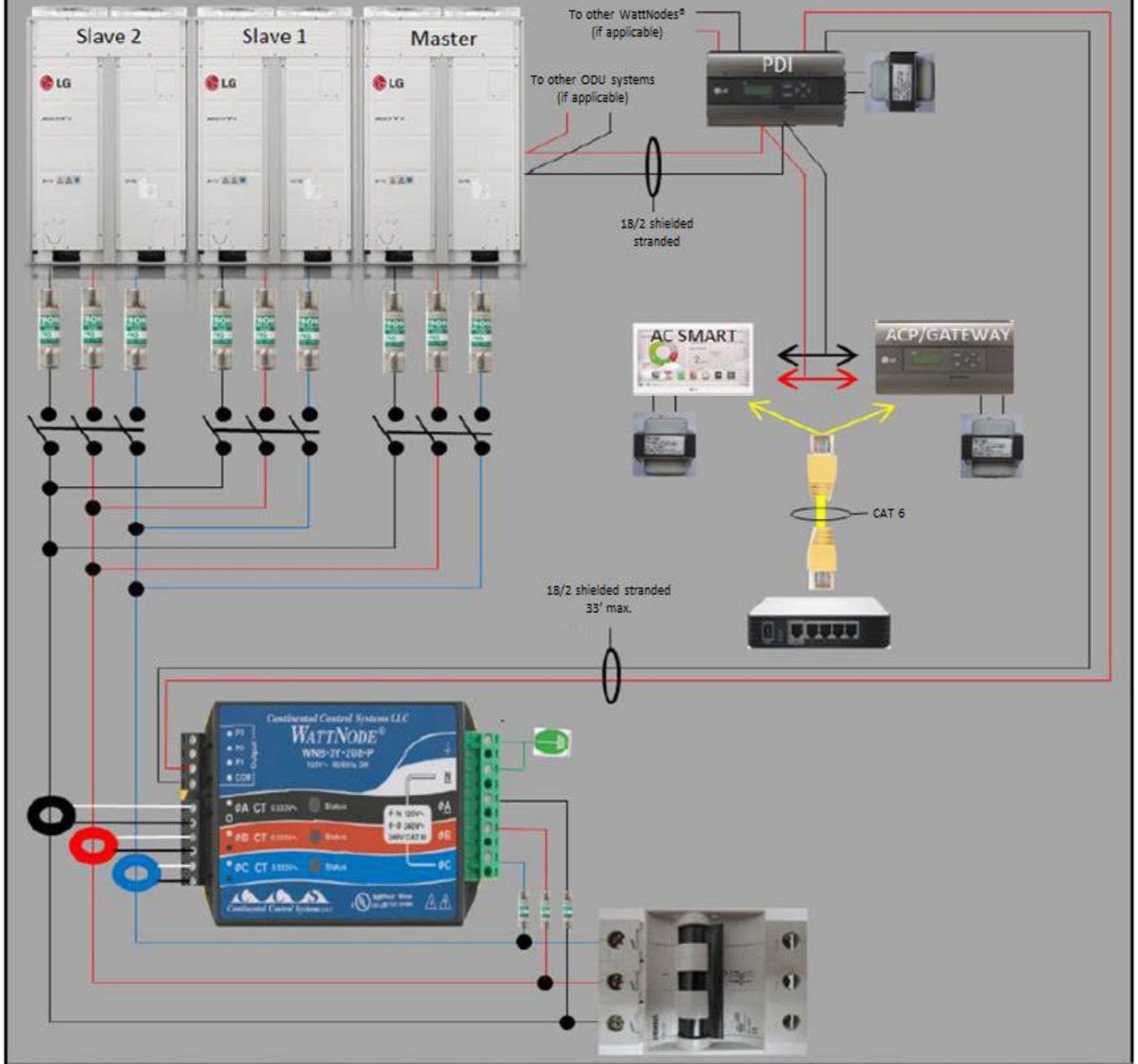
For Multi V and Mini Series 4 Heat Recovery/Heat Pump Air source Outdoor Units						
Tons	Model Numbers	MCA	Voltage-PH	WattNode® Meter Model (QTY 1)	CT Part Number	CT QTY
2	ARUN024GSS4	19.6	208 1Ø	WNB-3D-240-P Opt DPO,Kh=10,CT=50,PW=75,SSR	ACTL-0750-050	2
3	ARUN038GSS4	25				
4	ARUN048GSS4	30				
4.4	ARUN053GSS4	33				
5	ARUx060GSS4	25.4				
6	ARUx072BTE4	25.3	208 3Ø	WNB-3D-240-P Opt DPO,Kh=10,CT=50,PW=75,SSR	ACTL-0750-050	3
6	ARUx072DTE4	16.7	460 3Ø	WNB-3D-480-P Opt DPO,Kh=10,CT=50,PW=75,SSR	ACTL-0750-050	
8	ARUx096BTE4	40.1	208 3Ø	WNB-3D-240-P Opt DPO,Kh=10,CT=50,PW=75,SSR	ACTL-0750-050	
8	ARUx096DTE4	23.2	460 3Ø	WNB-3D-480-P Opt DPO,Kh=10,CT=50,PW=75,SSR	ACTL-0750-050	
10	ARUx121BTE4	40.3	208 3Ø	WNB-3D-240-P Opt DPO,Kh=10,CT=50,PW=75,SSR	ACTL-0750-050	
10	ARUx121DTE4	24	460 3Ø	WNB-3D-480-P Opt DPO,Kh=10,CT=50,PW=75,SSR	ACTL-0750-050	
12	ARUx144BTE4	48.8	208 3Ø	WNB-3D-240-P Opt DPO,Kh=10,CT=50,PW=75,SSR	ACTL-0750-050	
12	ARUx144DTE4	31.6	460 3Ø	WNB-3D-480-P Opt DPO,Kh=10,CT=50,PW=75,SSR	ACTL-0750-050	
14	ARUx168BTE4	52.5	208 3Ø	WNB-3D-240-P Opt DPO,Kh=10,CT=100,PW=75,SSR	ACTL-0750-100	
14	ARUx168DTE4	33.9	460 3Ø	WNB-3D-480-P Opt DPO,Kh=10,CT=50,PW=75,SSR	ACTL-0750-050	
16	ARUx192BTE4	65.6	208 3Ø	WNB-3D-240-P Opt DPO,Kh=10,CT=100,PW=75,SSR	ACTL-0750-100	
16	ARUx192DTE4	40.7	460 3Ø	WNB-3D-480-P Opt DPO,Kh=10,CT=50,PW=75,SSR	ACTL-0750-050	
18	ARUx216BTE4	74.1	208 3Ø	WNB-3D-240-P Opt DPO,Kh=10,CT=100,PW=75,SSR	ACTL-0750-100	
18	ARUx216DTE4	48.3	460 3Ø	WNB-3D-480-P Opt DPO,Kh=10,CT=50,PW=75,SSR	ACTL-0750-050	
20	ARUx240BTE4	88.9	208 3Ø	WNB-3D-240-P Opt DPO,Kh=10,CT=100,PW=75,SSR	ACTL-0750-100	
20	ARUx240DTE4	54.8	460 3Ø	WNB-3D-480-P Opt DPO,Kh=10,CT=100,PW=75,SSR	ACTL-0750-100	
22	ARUx264BTE4	89.1	208 3Ø	WNB-3D-240-P Opt DPO,Kh=10,CT=100,PW=75,SSR	ACTL-0750-100	
22	ARUx264DTE4	55.6	460 3Ø	WNB-3D-480-P Opt DPO,Kh=10,CT=100,PW=75,SSR	ACTL-0750-100	
24	ARUx288BTE4	97.6	208 3Ø	WNB-3D-240-P Opt DPO,Kh=10,CT=100,PW=75,SSR	ACTL-0750-100	
24	ARUx288DTE4	63.2	460 3Ø	WNB-3D-480-P Opt DPO,Kh=10,CT=100,PW=75,SSR	ACTL-0750-100	
26	ARUx313BTE4	101.3	208 3Ø	WNB-3D-240-P Opt DPO,Kh=10,CT=150,PW=75,SSR	ACTL-0750-150	
26	ARUx313DTE4	65.5	460 3Ø	WNB-3D-480-P Opt DPO,Kh=10,CT=100,PW=75,SSR	ACTL-0750-100	
28	ARUx337BTE4	105	208 3Ø	WNB-3D-240-P Opt DPO,Kh=10,CT=150,PW=75,SSR	ACTL-0750-150	
28	ARUx337DTE4	67.8	460 3Ø	WNB-3D-480-P Opt DPO,Kh=10,CT=100,PW=75,SSR	ACTL-0750-100	
26	ARUx312BTE4	114.2	208 3Ø	WNB-3D-240-P Opt DPO,Kh=10,CT=150,PW=75,SSR	ACTL-0750-150	
26	ARUx312DTE4	71.5	460 3Ø	WNB-3D-480-P Opt DPO,Kh=10,CT=100,PW=75,SSR	ACTL-0750-100	
28	ARUx336BTE4	129	208 3Ø	WNB-3D-240-P Opt DPO,Kh=10,CT=150,PW=75,SSR	ACTL-0750-150	
28	ARUx336DTE4	78	460 3Ø	WNB-3D-480-P Opt DPO,Kh=10,CT=100,PW=75,SSR	ACTL-0750-100	
30	ARUx360BTE4	129.2	208 3Ø	WNB-3D-240-P Opt DPO,Kh=10,CT=150,PW=75,SSR	ACTL-0750-150	
30	ARUx360DTE4	78.8	460 3Ø	WNB-3D-480-P Opt DPO,Kh=10,CT=100,PW=75,SSR	ACTL-0750-100	
32	ARUx384BTE4	154.1	208 3Ø	WNB-3D-240-P Opt DPO,Kh=10,CT=200,PW=75,SSR	ACTL-0750-200	
32	ARUx384DTE4	94.8	460 3Ø	WNB-3D-480-P Opt DPO,Kh=10,CT=100,PW=75,SSR	ACTL-0750-100	
34	ARUx408BTE4	154.3	208 3Ø	WNB-3D-240-P Opt DPO,Kh=10,CT=200,PW=75,SSR	ACTL-0750-200	
34	ARUx408DTE4	95.6	460 3Ø	WNB-3D-480-P Opt DPO,Kh=10,CT=100,PW=75,SSR	ACTL-0750-100	
36	ARUx432BTE4	171	208 3Ø	WNB-3D-240-P Opt DPO,Kh=10,CT=200,PW=75,SSR	ACTL-0750-200	
36	ARUx432DTE4	107.4	460 3Ø	WNB-3D-480-P Opt DPO,Kh=10,CT=150,PW=75,SSR	ACTL-0750-150	
38	ARUx456BTE4	171	208 3Ø	WNB-3D-240-P Opt DPO,Kh=10,CT=200,PW=75,SSR	ACTL-0750-200	
38	ARUx456DTE4	107.4	460 3Ø	WNB-3D-480-P Opt DPO,Kh=10,CT=150,PW=75,SSR	ACTL-0750-150	
40	ARUx480BTE4	171	208 3Ø	WNB-3D-240-P Opt DPO,Kh=10,CT=200,PW=75,SSR	ACTL-0750-200	
40	ARUx480DTE4	107.4	460 3Ø	WNB-3D-480-P Opt DPO,Kh=10,CT=150,PW=75,SSR	ACTL-0750-150	
42	ARUx504BTE4	171	208 3Ø	WNB-3D-240-P Opt DPO,Kh=10,CT=200,PW=75,SSR	ACTL-0750-200	
42	ARUx504DTE4	107.4	460 3Ø	WNB-3D-480-P Opt DPO,Kh=10,CT=150,PW=75,SSR	ACTL-0750-150	

For Multi V Series 5 Heat Recovery/Heat Pump Water source Outdoor Units						
Tons	ODU Numbers	MCA	Voltage-PH	WattNode® Meter Model (QTY 1)	CT Part Number	CT QTY
6	ARWM072BAS5	13.8	208 3Ø	WNB-3D-240-P Opt DPO,Kh=10,CT=50,PW=75,SSR	ACTL-0750-050	3
6	ARWM072DAS5	9.8	460 3Ø	WNB-3D-480-P Opt DPO,Kh=10,CT=50,PW=75,SSR	ACTL-0750-050	
8	ARWM096BAS5	19.4	208 3Ø	WNB-3D-240-P Opt DPO,Kh=10,CT=50,PW=75,SSR	ACTL-0750-050	
8	ARWM096DAS5	11.1	460 3Ø	WNB-3D-480-P Opt DPO,Kh=10,CT=50,PW=75,SSR	ACTL-0750-050	
10	ARWM121BAS5	27.7	208 3Ø	WNB-3D-240-P Opt DPO,Kh=10,CT=50,PW=75,SSR	ACTL-0750-050	
10	ARWM121DAS5	13.8	460 3Ø	WNB-3D-480-P Opt DPO,Kh=10,CT=50,PW=75,SSR	ACTL-0750-050	
12	ARWM144BAS5	32.7	208 3Ø	WNB-3D-240-P Opt DPO,Kh=10,CT=50,PW=75,SSR	ACTL-0750-050	
12	ARWM144DAS5	16.6	460 3Ø	WNB-3D-480-P Opt DPO,Kh=10,CT=50,PW=75,SSR	ACTL-0750-050	
14	ARWM168BAS5	33.2	208 3Ø	WNB-3D-240-P Opt DPO,Kh=10,CT=50,PW=75,SSR	ACTL-0750-050	
14	ARWM168DAS5	19.4	460 3Ø	WNB-3D-480-P Opt DPO,Kh=10,CT=50,PW=75,SSR	ACTL-0750-050	
16	ARWM192BAS5	38.8	208 3Ø	WNB-3D-240-P Opt DPO,Kh=10,CT=50,PW=75,SSR	ACTL-0750-050	
16	ARWM192DAS5	24.9	460 3Ø	WNB-3D-480-P Opt DPO,Kh=10,CT=50,PW=75,SSR	ACTL-0750-050	
16	ARWM191DAS5	22.2	460 3Ø	WNB-3D-480-P Opt DPO,Kh=10,CT=50,PW=75,SSR	ACTL-0750-050	
18	ARWM216BAS5	47.1	208 3Ø	WNB-3D-240-P Opt DPO,Kh=10,CT=50,PW=75,SSR	ACTL-0750-050	
18	ARWM216DAS5	24.9	460 3Ø	WNB-3D-480-P Opt DPO,Kh=10,CT=50,PW=75,SSR	ACTL-0750-050	
20	ARWM240BAS5	55.4	208 3Ø	WNB-3D-240-P Opt DPO,Kh=10,CT=100,PW=75,SSR	ACTL-0750-100	
20	ARWM240DAS5	27.6	460 3Ø	WNB-3D-480-P Opt DPO,Kh=10,CT=50,PW=75,SSR	ACTL-0750-050	
22	ARWM264BAS5	60.4	208 3Ø	WNB-3D-240-P Opt DPO,Kh=10,CT=100,PW=75,SSR	ACTL-0750-100	
22	ARWM264DAS5	30.4	460 3Ø	WNB-3D-480-P Opt DPO,Kh=10,CT=50,PW=75,SSR	ACTL-0750-050	
24	ARWM288BAS5	65.4	208 3Ø	WNB-3D-240-P Opt DPO,Kh=10,CT=100,PW=75,SSR	ACTL-0750-100	
24	ARWM288DAS5	33.2	460 3Ø	WNB-3D-480-P Opt DPO,Kh=10,CT=50,PW=75,SSR	ACTL-0750-050	
30	ARWM360BAS5	83.1	208 3Ø	WNB-3D-240-P Opt DPO,Kh=10,CT=100,PW=75,SSR	ACTL-0750-100	
30	ARWM360DAS5	44.3	460 3Ø	WNB-3D-480-P Opt DPO,Kh=10,CT=50,PW=75,SSR	ACTL-0750-050	
36	ARWM432BAS5	98.1	208 3Ø	WNB-3D-240-P Opt DPO,Kh=10,CT=100,PW=75,SSR	ACTL-0750-100	
36	ARWM432DAS5	49.8	460 3Ø	WNB-3D-480-P Opt DPO,Kh=10,CT=50,PW=75,SSR	ACTL-0750-050	
42	ARWM504DAS5	60.9	460 3Ø	WNB-3D-480-P Opt DPO,Kh=10,CT=100,PW=75,SSR	ACTL-0750-100	
48	ARWM576DAS5	74.7	460 3Ø	WNB-3D-480-P Opt DPO,Kh=10,CT=100,PW=75,SSR	ACTL-0750-100	

For Multi V Series 4 Heat Recovery/Heat Pump Water source Outdoor Units						
Tons	Model Numbers	MCA	Voltage-PH	WattNode® Meter Model (QTY 1)	CT Part Number	CT QTY
6	ARWx072BAS4	35	208 3Ø	WNB-3D-240-P Opt DPO,Kh=10,CT=50,PW=75,SSR	ACTL-0750-050	3
6	ARWx072DAS4	16.2	460 3Ø	WNB-3D-480-P Opt DPO,Kh=10,CT=50,PW=75,SSR	ACTL-0750-050	
8	ARWx096BAS4	35.5	208 3Ø	WNB-3D-240-P Opt DPO,Kh=10,CT=50,PW=75,SSR	ACTL-0750-050	
8	ARWx096DAS4	17.2	460 3Ø	WNB-3D-480-P Opt DPO,Kh=10,CT=50,PW=75,SSR	ACTL-0750-050	
10	ARWx121BAS4	36	208 3Ø	WNB-3D-240-P Opt DPO,Kh=10,CT=50,PW=75,SSR	ACTL-0750-050	
10	ARWx121DAS4	19.3	460 3Ø	WNB-3D-480-P Opt DPO,Kh=10,CT=50,PW=75,SSR	ACTL-0750-050	
12	ARWx144BAS4	36	208 3Ø	WNB-3D-240-P Opt DPO,Kh=10,CT=50,PW=75,SSR	ACTL-0750-050	
12	ARWx144DAS4	25.7	460 3Ø	WNB-3D-480-P Opt DPO,Kh=10,CT=50,PW=75,SSR	ACTL-0750-050	
16	ARWx192BAS4	71	208 3Ø	WNB-3D-240-P Opt DPO,Kh=10,CT=100,PW=75,SSR	ACTL-0750-100	
16	ARWx192DAS4	28	460 3Ø	WNB-3D-480-P Opt DPO,Kh=10,CT=50,PW=75,SSR	ACTL-0750-050	
20	ARWx240BAS4	88.9	208 3Ø	WNB-3D-240-P Opt DPO,Kh=10,CT=100,PW=75,SSR	ACTL-0750-100	
20	ARWx240DAS4	42.9	460 3Ø	WNB-3D-480-P Opt DPO,Kh=10,CT=50,PW=75,SSR	ACTL-0750-050	
24	ARWx288BAS4	72	208 3Ø	WNB-3D-240-P Opt DPO,Kh=10,CT=100,PW=75,SSR	ACTL-0750-100	
24	ARWx289DAS4	51.4	460 3Ø	WNB-3D-480-P Opt DPO,Kh=10,CT=100,PW=75,SSR	ACTL-0750-100	
28	ARWx336BAS4	107.5	208 3Ø	WNB-3D-240-P Opt DPO,Kh=10,CT=150,PW=75,SSR	ACTL-0750-150	
28	ARWx337DAS4	53.7	460 3Ø	WNB-3D-480-P Opt DPO,Kh=10,CT=100,PW=75,SSR	ACTL-0750-100	
36	ARWx432BAS4	108	208 3Ø	WNB-3D-240-P Opt DPO,Kh=10,CT=150,PW=75,SSR	ACTL-0750-150	
36	ARWx432DAS4	77.1	460 3Ø	WNB-3D-480-P Opt DPO,Kh=10,CT=100,PW=75,SSR	ACTL-0750-100	
40	ARWx480DAS4	79.4	460 3Ø	WNB-3D-480-P Opt DPO,Kh=10,CT=100,PW=75,SSR	ACTL-0750-100	
48	ARWx576DAS4	84	460 3Ø	WNB-3D-480-P Opt DPO,Kh=10,CT=100,PW=75,SSR	ACTL-0750-100	
For Multi V Mini Series 2 Heat Pump Water source Outdoor Units						
Tons	Model Numbers	MCA	Voltage-PH	WattNode® Meter Model (QTY 1)	CT Part Number	CT QTY
6	ARWN038GA2	26	208 3Ø	WNB-3D-240-P Opt DPO,Kh=10,CT=50,PW=75,SSR	ACTL-0750-050	3
6	ARWN048GA2	26.5	208 3Ø	WNB-3D-240-P Opt DPO,Kh=10,CT=50,PW=75,SSR	ACTL-0750-050	
8	ARWN053GA2	27	208 3Ø	WNB-3D-240-P Opt DPO,Kh=10,CT=50,PW=75,SSR	ACTL-0750-050	

ODU-PDI-Central Controller Power/Control/Data Wiring

With single circuit power feed to multi chassis system (per LG Installation Instructions)



ODU-PDI-Central Controller Power/Control/Data Wiring

With separate circuit power feeds to multi chassis system

