

Job Name/Location:

Tag #:

Date:

For: ☐ File ☐ Resubmit

PO No.:

☐ Approval ☐ Other _____

Architect:

GC:

Engr:

Mech:

Rep:

(Company)

(Project Manager)

ZVRCZDWC1

Door and Window Contact

for CRC2 Series and MS8000 Series Controllers



Door/Window Contact ZVRCZDWC1

Model: ZVRCZDWC1

Function: Door/Window Contact

Electrical:

Power

Internal battery (CRC2450)

Connectivity:

Wireless Communications

2.4GHz mesh network

ZigBee® HA3.0 Compatible

Range up to 40ft; 300 ft open field

Surrounding Conditions:

Ambient Temperature

14 to 122 °F

MultiSITE CRC2 Remote Controller Additional Accessories (sold separately):

☐ ZVRCZPWC2 - ZigBee® Pro Wireless Module^{2,3}

☐ ZVRCZDWC1 Wireless Door Window Contact²

☐ ZVRCZMTH1 - Wireless Ceiling Mounted Occupancy,
Temperature and Humidity Sensor²

☐ ZVRCZWOC1 - Wireless Wall Mounted Occupancy Sensor²

☐ SEDCO2G5045 - Wireless CO2, Temperature, & Humidity Sensor²

☐ ZVRCZTRH1 - Wireless Temperature & Humidity Sensor²

☐ ZVRCZWLS1 - Wireless Water Leak Sensor² VCM8002V504 -

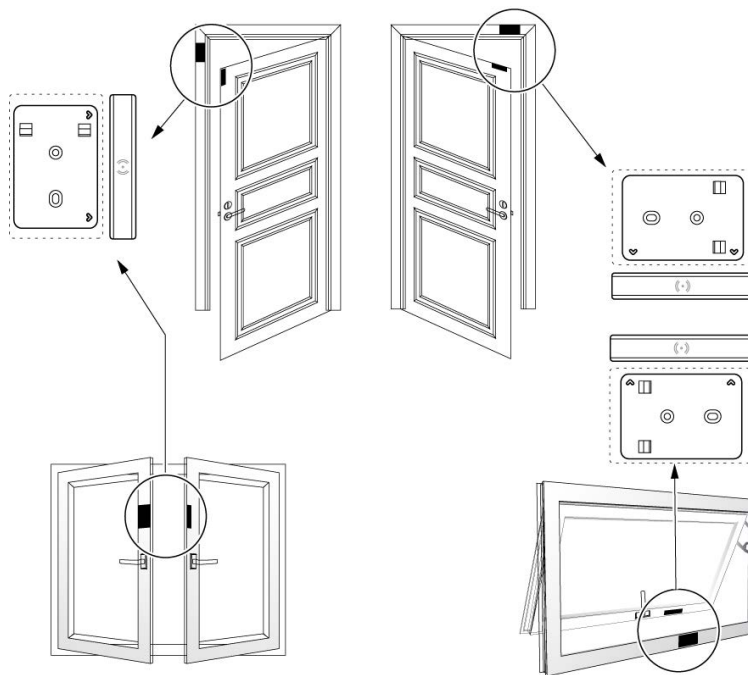
☐ Wi-fi Card Module (BACnet wireless IP)

Notes:

1. Available functions/features may differ based on connected system.

2. Up to 20 Zigbee sensors can be connected to a MultiSITE CRC2 Series Remote Controller & MS8000 Series Room Controller

3. The ZVRCZPWC2 is for use with the CRC2 and not for use with the CRC1 or MS8000 Series Room Controllers.



Job Name/Location:

ZVRCZDWC1

Door and Window Contact

for CRC2 Series and MS8000 Series Controllers



Tag #:

Date:

PO No.:

ZVRCZDWC1 Door/Window Contact

Sensor Dimensions: 1.30" W x 1.97" H x 0.64" D
Magnet Dimensions: 0.35" W x 1.97" H x 0.35" D
Battery Voltage: 3.0VDC Lithium
Battery Cell: CR2450 (up to 5 years)
Ambient Temperature: 14°F to 122°F (-10°C to 50°C)

