

Job Name/Location:

Tag #:

Date:

For: ☐ File ☐ Resubmit

PO No.:

☐ Approval ☐ Other \_\_\_\_\_

Architect:

GC:

Engr:

Mech:

Rep:

(Company)

(Project Manager)

## ZVRCZMTH1

Occupancy, Temperature, and Humidity Sensor  
for CRC2 Series and MS8000 Series Controllers



Ceiling Mounted  
Occupancy, Temp., Humidity Sensor

## Model: ZVRCZMTH1

Function: Occupancy, Temp., Humidity

### Electrical:

Power: Internal battery: 3V / LR03 AAA (2pcs)

### Connectivity:

Wireless Communications

2.4GHz mesh network

ZigBee® HA3.0 Compatible

Range up to 40ft; 300 ft open field

### Type of Measurement:

Motion Detection:

Refer to diagram on following page.

Temperature:

14 to 122°F (-10 to 50°C)

Humidity:

10 to 95% RH

### MultisITE CRC2 Remote Controller Additional Accessories (sold separately):

☐ ZVRCZPWC2 - ZigBee® Pro Wireless Module<sup>2,3</sup>

☐ ZVRCZDWC1 Wireless Door Window Contact<sup>2</sup>

☐ ZVRCZMTH1 - Wireless Ceiling Mounted Occupancy,  
Temperature and Humidity Sensor<sup>2</sup>

☐ ZVRCZWOC1 - Wireless Wall Mounted Occupancy Sensor<sup>2</sup>

☐ SEDCO2G5045 - Wireless CO2, Temperature, & Humidity Sensor<sup>2</sup>

☐ ZVRCZTRH1 - Wireless Temperature & Humidity Sensor<sup>2</sup>

☐ ZVRCZWLS1 - Wireless Water Leak Sensor<sup>2</sup> VCM8002V504 -

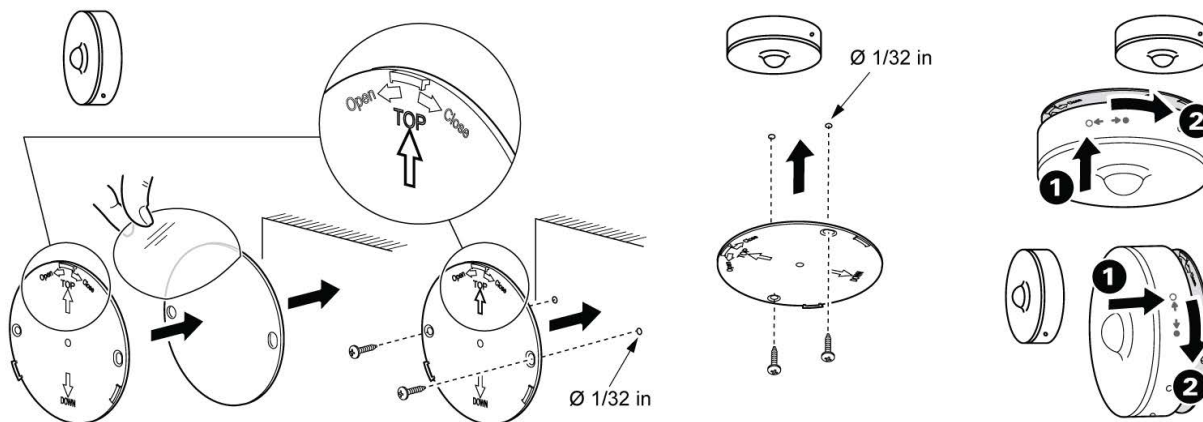
☐ Wi-fi Card Module (BACnet wireless IP)

### Notes:

1. Available functions/features may differ based on connected system.

2. Up to 20 Zigbee sensors can be connected to a MultisITE CRC2 Series Remote Controller & MS8000 Series Room Controller

3. The ZVRCZPWC2 is for use with the CRC2 and not for use with the CRC1 or MS8000 Series Room Controllers.



ZVRCZMTH1

Occupancy, Temperature, and Humidity Sensor

for CRC2 Series and MS8000 Series Controllers



Tag #:

Date:

PO No.:

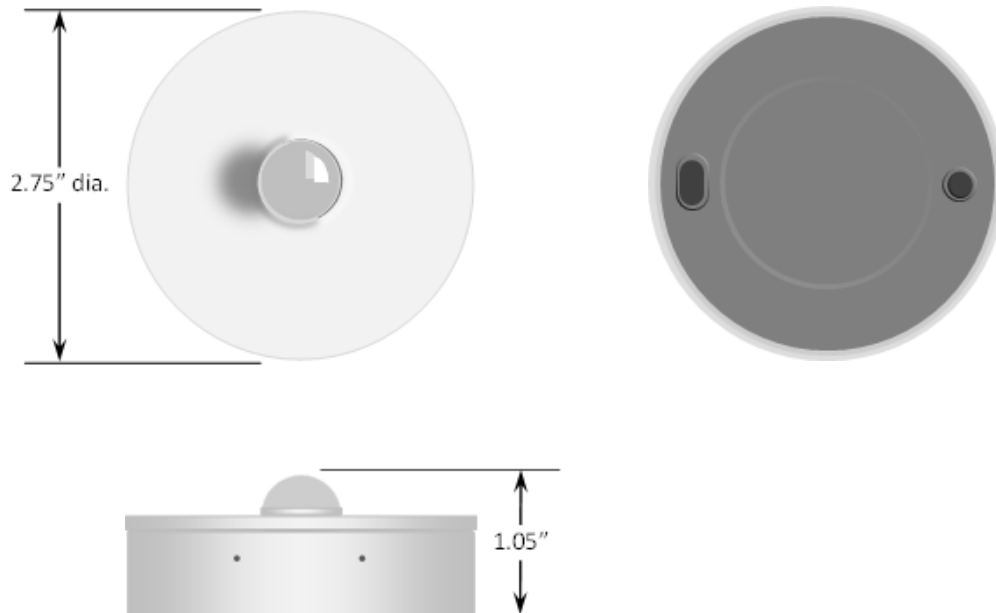
## ZVRCZMTH1 Ceiling Mounted Occupancy, Temperature and Humidity Sensor

Dimensions: 2.75in diameter x 1.05in height

Battery Voltage: 3.0VDC Alkaline

Battery Cell: LR03 AAA x 2 (Up to 5 years)

Ambient Temperature: 14°F to 122°F (-10°C to 50°C)



Note: Position the ceiling motion sensor for best use of its detection zones. All measurements are approximate and will vary with installation.

