

Job Name/Location:

Tag No.:

Date:

For: File Resubmit

PO No.:

Approval Other\_\_\_\_\_

Architect:

GC:

Engr:

Mech:

Rep:

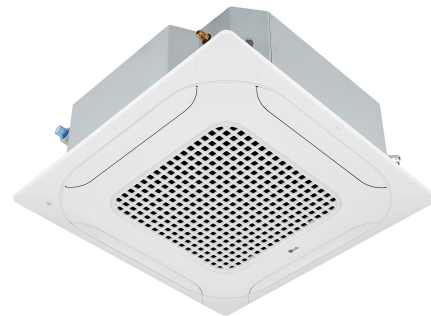
(Company)

(Project Manager)

ARNU183TQD4

Multi V™ Four-Way 2' x 2' Ceiling Cassette

19,100 Btu/h Indoor Unit



## Performance:

Cooling Capacity (Btu/h) <sup>1</sup>	19,100
Heating Capacity (Btu/h) <sup>1</sup>	21,500
L/M/H Power Input at Factory Default (W)	19 / 22 / 25

Rated capacity is certified under AHRI Standard 1230. Ratings are subject to change without notice. Current certified ratings are available at [www.ahridirectory.org](http://www.ahridirectory.org).

## Electrical:

Power Supply (V/Hz/Ø)	208-230/60/1
Rated Amps	0.20

## Piping:

Refrigerant	
Liquid Line (in., O.D.)	1/4 Flare
Vapor Line (in., O.D.)	1/2 Flare
Condensate	
Condensate Line (in., I.D.)	1
Factory Installed Pump <sup>2</sup>	Yes

## Controls Features:

- Auto changeover (Heat Recovery only)
- Auto operation
- Auto restart
- Dual thermistor control
- Dual setpoint control
- Timer (on/off)
- Weekly schedule
- Auto direction/ swing (up/down)
- Swirl wind (alternating vanes)
- Fan speed control
- Jet cool (fast cooling)
- Filter life display
- Multiple auxiliary heater applications
- Child lock
- Group control
- High ceiling
- Hot start
- Self diagnostics
- External on/off control
- Wi-Fi compatible
- Auto fan
- Leak detection

## Required Accessories:

- ☐ Panel (24-13/32" x 24-13/32") - PT-QAGW0

## Optional Accessories:

- ☐ Ventilation Flange - PTVK430
- ☐ Wireless Remote Controller - PWLSSB21H
- ☐ MultiSITE™ CRC2 Controller - PREMTBVC2
- ☐ MultiSITE CRC2+ Controller - PREMTBVC3
- ☐ MultiSITE CRC2+Z Controller - PREMTBVC4
- ☐ Simple Remote Controller - PREMTCO0U
- ☐ Standard III Remote Controller (White Housing) – PREMTB100
- ☐ Standard III Remote Controller (Black Housing) – PREMTBB10
- ☐ Deluxe Remote Controller – PREMTA201
- ☐ Remote Temperature Button Sensor - ZRTBS01
- ☐ Simple Dry Contact (1 contact, 24 VAC external power) - PDRYCB100
- ☐ Dry Contact for Third Party Thermostat<sup>5</sup> - PDRYCB320
- ☐ Dry Contact for Economizer - PDRYCB400
- ☐ Auxiliary Heater Kit<sup>5</sup> - PRARH1
- ☐ Wi-Fi Module - PWFMD200

## Entering Mixed Air:

Cooling Maximum <sup>1</sup> (°F WB)	76
Heating Minimum (°F DB)	59

## Unit Data:

Refrigerant Type	R410A
Refrigerant Control	EEV
Sound Pressure dB(A) (H/M/L) <sup>3</sup>	37 / 35 / 34
Sound Power dB(A) (H) <sup>4</sup>	52
Standard Filter Type	Washable
Unit Net Weight (lbs.)	35
Unit Shipping Weight (lbs.)	40
Panel Net Weight (lbs.)	7
Panel Shipping Weight (lbs.)	11

## Fan:

Type	Turbo
Quantity	1
Motor/Drive	Brushless Digitally Controlled/Direct
Motor Quantity	1
Air Flow Rate H/M/L (CFM)	396 / 388 / 353

## Notes:

1. See Engineering Manual for sensible and latent capacities.
2. Maximum lift is 27-9/16 inches from bottom of unit.
3. Sound Pressure levels are tested in an anechoic chamber under ISO Standard 3745.
4. Sound Power levels are tested in a reverberation chamber under ISO Standard 3741.
5. If a Third-Party Dry Contact and an LG internal heater or an LG Auxiliary Heater Kit is installed, supplemental heat capability cannot be controlled by the Third-Party Thermostat.
6. Communication cable between (main) outdoor unit to indoor units / heat recovery units to be 18 AWG, 2-conductor, twisted, stranded, shielded. Ensure the communication cable shield is properly grounded to the (main) outdoor unit chassis only. **DO NOT** ground the outdoor unit to indoor units / heat recovery units communication cable at any other point. Wiring must comply with all applicable local and national codes.
7. Power wiring is field provided, and must comply with the applicable local and national codes.
8. This unit comes with a dry nitrogen charge.
9. All capacities are net with a combination ratio between 95 – 105%.
10. Must follow installation instructions in the applicable LG installation manual.



162279





**PO No.:**

