

Job Name/Location:

Tag No.:

Date:

For: File Resubmit

PO No.:

Approval Other\_\_\_\_\_

Architect:

GC:

Engr:

Mech:

Rep:

(Company)

(Project Manager)

PRHR063A

Multi V™ Heat Recovery Unit

Six (6) Port



#### Performance:

Maximum Port Capacity Btu/h (each port) <sup>1,2</sup>	60,000
Maximum Unit Capacity Btu/h (sum of ports)	230,000
Number of Indoor Unit Ports	6
Max. Connectible Number of Indoor Units	48
Max. Connectible Number of Indoor Units per Branch	8
Power Input <sup>3</sup>	
Cooling	75.9
Heating	72.1

#### Refrigerant Piping:<sup>4</sup>

Port Liquid Line (in., O.D.)	3/8
Port Vapor Line (in., O.D.)	5/8
System Liquid Line (in., O.D.)	5/8
System Vapor Line High (in., O.D.)	7/8
System Vapor Line Low (in., O.D.)	1-1/8

#### Electrical:<sup>3</sup>

Power Supply (V/Hz/Ø)	208-230/60/1
Rated Amps	0.09

#### Unit Data:

Refrigerant Type	R410A
Refrigerant Control	EEV
Sound Pressure	
Cooling Mode dB(A)	31
Heating Mode dB(A)	31
Simultaneous dB(A)	38
Changeover Cooling to Heating	33
Changeover Heating to Cooling	38
Unit Net Weight (lbs.)	60
Unit Shipping Weight (lbs.)	75

#### Features:

- Allows connected indoor units to be in cooling or heating mode simultaneously.
- Internal components are insulated.
  - External casing insulation is not needed.<sup>4</sup>
  - Condensate drain not needed.
- Includes high pressure vapor pipe strainer accessory.
- Factory installed indoor unit vapor pipe strainers.
- Series or parallel connection with additional heat recovery units.
- Flexible placement for service access or pipe routing.
- Access panels:
  - Top panel for EEV heads.
  - Rear panel for control access.
  - Bottom panel for refrigerant circuit.

#### Notes:

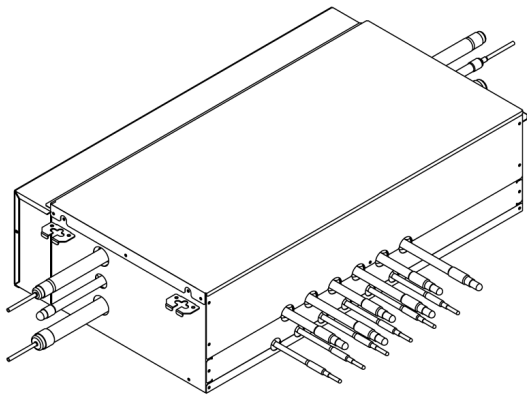
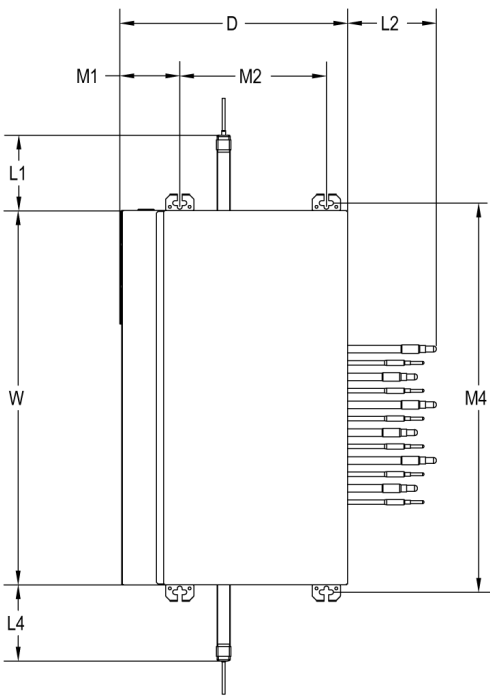
1. Each port can allow up to 8 indoor units with a maximum capacity of 60 MBh per port.
2. Multiple units installed on the same heat recovery port must operate in the same mode. Auto-changeover or Mode override is not possible.
3. Power wiring is field provided, and must comply with the applicable local and national codes.
4. All refrigerant piping requires insulation.
5. Communication cable between Main outdoor units to indoor units / heat recovery units to be 18 AWG, 2-conductor, twisted, stranded, shielded. Ensure the communication cable shield is properly grounded to the Main outdoor unit chassis only. ⚡ Do not ground the outdoor unit to indoor units / heat recovery units communication cable at any other point. Wiring must comply with all applicable local and national codes.
6. Kit components must be kept dry and free of debris before installation.
7. This unit comes with a dry nitrogen charge.
8. Must follow installation instructions in the applicable LG installation manual.



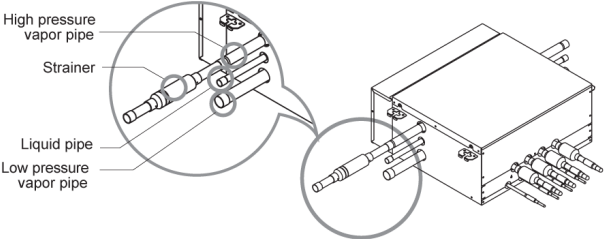
**PRHR063A**  
Multi V™ Heat Recovery Unit  
Six (6) Port



Tag No.: \_\_\_\_\_  
Date: \_\_\_\_\_  
PO No.: \_\_\_\_\_

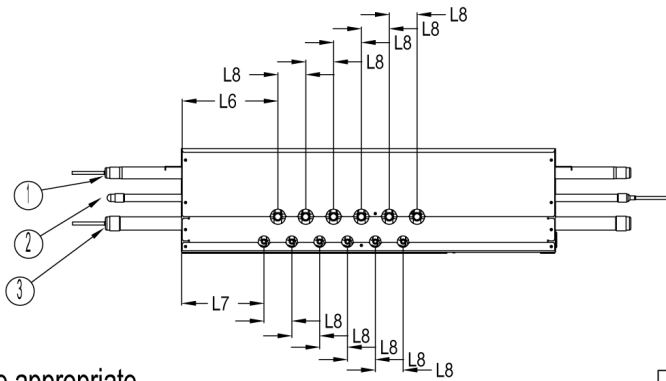
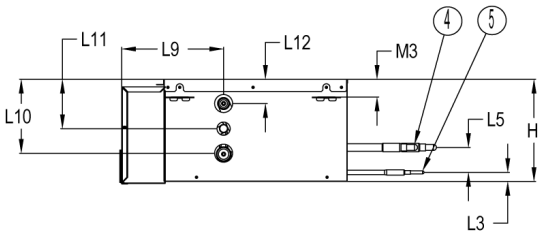


– Connect the strainer that is provided as an accessory to the HRU high pressure vapor pipe.  
– Strainers are factory installed on the indoor unit vapor piping.



W	31-1/4"
H	8-5/8"
D	18-15/16"
L1	6-5/16"
L2	6-15/16"
L3	3/4"
L4	6-5/16"
L5	2-3/16"
L6	8-1/16"
L7	6-7/8"
L8	2-5/16"
L9	8-9/16"
L10	6-3/16"
L11	3-9/16"
L12	2"
M1	4-15/16"
M2	12-1/4"
M3	1-1/2"
M4	32-1/2"

[Unit: inch]



**Note:**

1. Unit should be installed in compliance with the appropriate LG installation manual.
2. Unit should be grounded in accordance with the local regulations or applicable national codes.
3. All electrical components and materials supplied from the site must comply with the local regulations or national codes.

6	Control box
5	Liquid pipe to Indoor unit
4	Vapor pipe to Indoor unit
3	Low pressure vapor pipe
2	Liquid pipe to Outdoor unit
1	High pressure vapor pipe
No.	Part Name