

Job Name/Location:

Tag #:

Date:

For: ☐ File ☐ Resubmit

PO No.:

☐ Approval ☐ Other

Architect:

GC:

Engr:

Mech:

Rep:

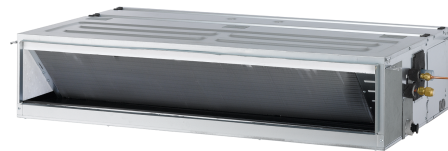
(Company)

(Project Manager)

ARNU423M2A4

Multi V™ Mid Static Ducted

42,000 Btu/h Indoor Unit

**Performance:**

Total Cooling Capacity (Btu/h)	42,000
Heating Capacity (Btu/h)	47,000
Max Power Input ¹ (W)	430
L/M/H Power Input at Factory Default (W)	136 / 193 / 231

Rated capacity is certified under AHRI Standard 1230-2023. Ratings are subject to change without notice. Current and past certified ratings are available at www.ahridirectory.org.

Electrical:

Power Supply (V/Hz/Ø)	208-230/60/1
Rated Amps (A)	2.3

Piping:

Refrigerant:

Liquid Line (in, OD)	3/8 Flare
Vapor Line (in, OD)	5/8 Flare

Condensate:

Condensate Pump Drain ² (in, ID)	1 Plain
Gravity Drain Plugged (in, OD)	1 (3/4 MPT)

Controls Features:

- Auto changeover (Heat Recovery only)
- Auto operation
- Auto restart
- Dual thermistor control
- Wi-Fi compatible
- Dual setpoint control
- Multiple aux heater applications
- Filter life display
- External on/off control
- Auto fan
- Leak detection
- Weekly schedule
- Fan speed control
- Group control
- Hot start
- Self diagnostics
- Timer (on/off)
- Child lock

Optional Accessories:

- ☐ Wireless Remote Controller³ - PWLSSB21H
- ☐ MultiSITE™ CRC2 Controller - PREMTBVC2
- ☐ MultiSITE CRC2+ Controller - PREMTBVC3
- ☐ MultiSITE CRC2+Z Controller - PREMTBVC4
- ☐ Simple Remote Controller - PREMTCC00U
- ☐ Standard III Remote Controller (White Housing) - PREMTB100
- ☐ Standard III Remote Controller (Black Housing) - PREMTBB10
- ☐ Deluxe Remote Controller - PREMTA201
- ☐ Remote Temperature Button Sensor - ZRTBS01
- ☐ Simple Dry Contact (1 contact, 24 VAC external power) - PDRYCB100
- ☐ Dry Contact for Third-Party Thermostat¹⁵ - PDRYCB320
- ☐ Dry Contact for Economizer - PDRYCB400
- ☐ Auxiliary Heater Kit¹⁵ - PRARH1
- ☐ Wi-Fi Module - PWFMD200
- ☐ High Efficiency Filter Box - ZFBXM201A

Entering Mixed Air:

Cooling Max ⁴ (°F WB)	76
Heating Min (°F DB)	59

Unit Data:

Refrigerant Type	R410A
Refrigerant Control	EEV
Sound Pressure ⁵ dB(A) (H/M/L, @0.24 ESP)	44 / 43 / 40
Sound Power ⁶ dB(A) (H/M/L, @0.24 ESP)	55 / 52 / 49
Filter Type	Washable
MERV	N/A
Filter Quantity	2
Filter Dimensions ⁷ (in)	9-11/16 x 23-15/16 x 3/16
Net Unit Weight (lbs)	86.2
Shipping Weight (lbs)	99.2

Fan:

Type	Sirocco
Fan Quantity	2
Motor/Drive	Brushless Digitally Controlled/Direct
Motor Quantity	1
High Mode Airflow Rate H/M/L (CFM)	1260 / 1076 / 888
High Mode External Static Pressure (ESP) ⁸ (in wg)	0.24
Airflow Range (CFM)	676 - 1,554
Minimum ESP (in wg) ⁸	0.16
Maximum ESP (in wg) ⁸	0.71

Notes:

- Maximum power input is rated at maximum setting value.
- Maximum lift is 27 in from bottom of unit. Check valve not included (field supplied).
- Requires an LG wall controller because ducted units do not have infrared receiver.
- See Engineering Manual for sensible and latent capacities.
- Sound Pressure levels are tested in an anechoic chamber under ISO Standard 3745.
- Sound Power levels are tested in a reverberation chamber under AHRI Standard 260.
- Actual filter sizes may vary.
- At factory fan speed setting.
- Maximum static pressure may result in reduced airflow (CFM).
- All Communication cable between Main outdoor units to indoor units / heat recovery units to be 18 AWG, 2-conductor, twisted, stranded, shielded. Ensure the communication cable shield is properly grounded to the Main outdoor unit chassis only. Do not ground the outdoor unit to indoor units / heat recovery units communication cable at any other point. Wiring must comply with all applicable local and national codes.
- Power wiring cable size must comply with the applicable local and national code.
- This unit comes with a dry nitrogen charge.
- All capacities are net with a combination ratio between 95 – 105%.
- Must follow installation instructions in the applicable LG installation manual.
- If a Third-Party Dry Contact and an LG internal heater or an LG Auxiliary Heater Kit is installed, supplemental heat capability cannot be controlled by the Third-Party Thermostat.

For continual product development, LG reserves the right to change specifications without notice.



Job Name/Location:

ARNU423M2A4

Multi V™ Mid Static Ducted

42,000 Btu/h Indoor Unit



Tag #:

Date:

PO No.:

[Unit: inch]

