

Job Name/Location:

Tag #:

Date:

For:  File  Resubmit

PO No.:

Approval  Other

Architect:

GC:

Engr:

Mech:

Rep:

(Company)

(Project Manager)

**ARNU723DDA4**

**Multi V™ Split Rooftop Unit**

**6 Ton RTU**



**Performance:**

Total Cooling Capacity (Btu/h)	72,000
Heating Capacity (Btu/h)	80,000
Max Power Input <sup>1</sup> (W)	750

**Electrical:**

Power Supply (V/Hz/Ø)	208-230/60/1
MCA (A)	8.3
MOP (A)	15

**Piping:**

Refrigerant:

Liquid Line (in, OD)	3/8
Low Pressure Vapor (in, OD)	3/4
High Pressure Vapor (in, OD)	5/8

Condensate:

Gravity Drain (in, OD)	1 Plain
------------------------	---------

**Controls Features:**

- Auto changeover
- Auto operation
- Auto restart
- Dual setpoint control
- External on/off control
- Auto fan
- Weekly schedule
- Fan speed control
- Group control
- Hot start
- Self diagnostics
- Timer (on/off)
- Child lock

**Optional Accessories:**

- Premium Controller - PREMTA000
- MultiSITE CRC1 Controller - PREMTBVC0
- MultiSITE CRC1+ Controller - PREMTBVC1
- Simple Controller - PREMTCC00U
- Simple Dry Contact (1 contact, 24 VAC external power) - PDRYCB100
- Dry Contact for Economizer - PDRYCB400
- Dry Contact for Third Party Thermostat - PDRYCB320
- Dry Bulb Economizer – ZCEC01000DB
- Single Enthalpy Economizer – ZCEC01000SE
- Dual Enthalpy Economizer – ZCEC01000DE
- Manual Outdoor Air Damper and Hood – ZCMH01000NA
- Power Exhaust, Dry-Bulb Modulating – ZCPE03050DB
- Power Exhaust, Single Enthalpy – ZCPE03050SE
- Power Exhaust, Dual Enthalpy – ZCPE03050DE
- 14" Tall Flat Knocked Down Curb – ZCCU0114NA
- 24" Tall Flat Knocked Down Curb – ZCCU0124NA
- 14" Tall Seismic Curb – ZCSC0114NA
- 24" Tall Seismic Curb – ZCS0124NA

**Entering Mixed Air:**

Cooling Max <sup>3</sup> (°F WB)	76
Heating Min (°F DB)	50

**Unit Data:**

Refrigerant Type	R410A
Refrigerant Control	EEV
Sound Power dB(A) (H/M/L)	69 / 66 / 63
Sound Pressure <sup>4</sup> dB(A) (H/M/L)	55 / 52 / 50
Filter Type	MERV 8
Filter Quantity	4
Filter Dimensions <sup>5</sup> (in)	16 x 20 x 2
Net Unit Weight (lbs)	430
Shipping Weight (lbs)	470

**Fan:**

Type	3D Plug
Fan Quantity	1
Motor/Drive	ECM/Direct
Motor Quantity	1
Standard Mode Airflow Rate H/M/L (CFM)	1800 / 1400 / 1100
Maximum ESP (in wg) <sup>7</sup>	1.4

**Notes:**

1. Maximum power input is rated at maximum setting value.
2. Requires an LG wall controller because ducted units do not have infrared receiver.
3. See Engineering Manual for sensible and latent capacities.
4. Sound Pressure levels are tested in an anechoic chamber under ISO Standard 3745.
5. Actual filter sizes may vary.
6. At factory fan speed setting.
7. Maximum static pressure may result in reduced airflow (CFM).
8. All Communication cable between Master outdoor units to indoor units / heat recovery units to be 18 AWG, 2-conductor, twisted, stranded, shielded. Ensure the communication cable shield is properly grounded to the Master outdoor unit chassis only. Do not ground the outdoor unit to indoor units / heat recovery units communication cable at any other point. Wiring must comply with all applicable local and national codes.
9. Power wiring cable size must comply with the applicable local and national code.
10. This unit comes with a dry nitrogen charge.
11. All capacities are net with a combination ratio between 95 – 105%.
12. Must follow installation instructions in the applicable LG installation manual.
13. Compatible with Multi V S Heat Recovery and Multi V S Heat Recovery only.
14. Allowable combination ratio range is 50% - 110%.



For continual product development, LG reserves the right to change specifications without notice.

Job Name/Location:

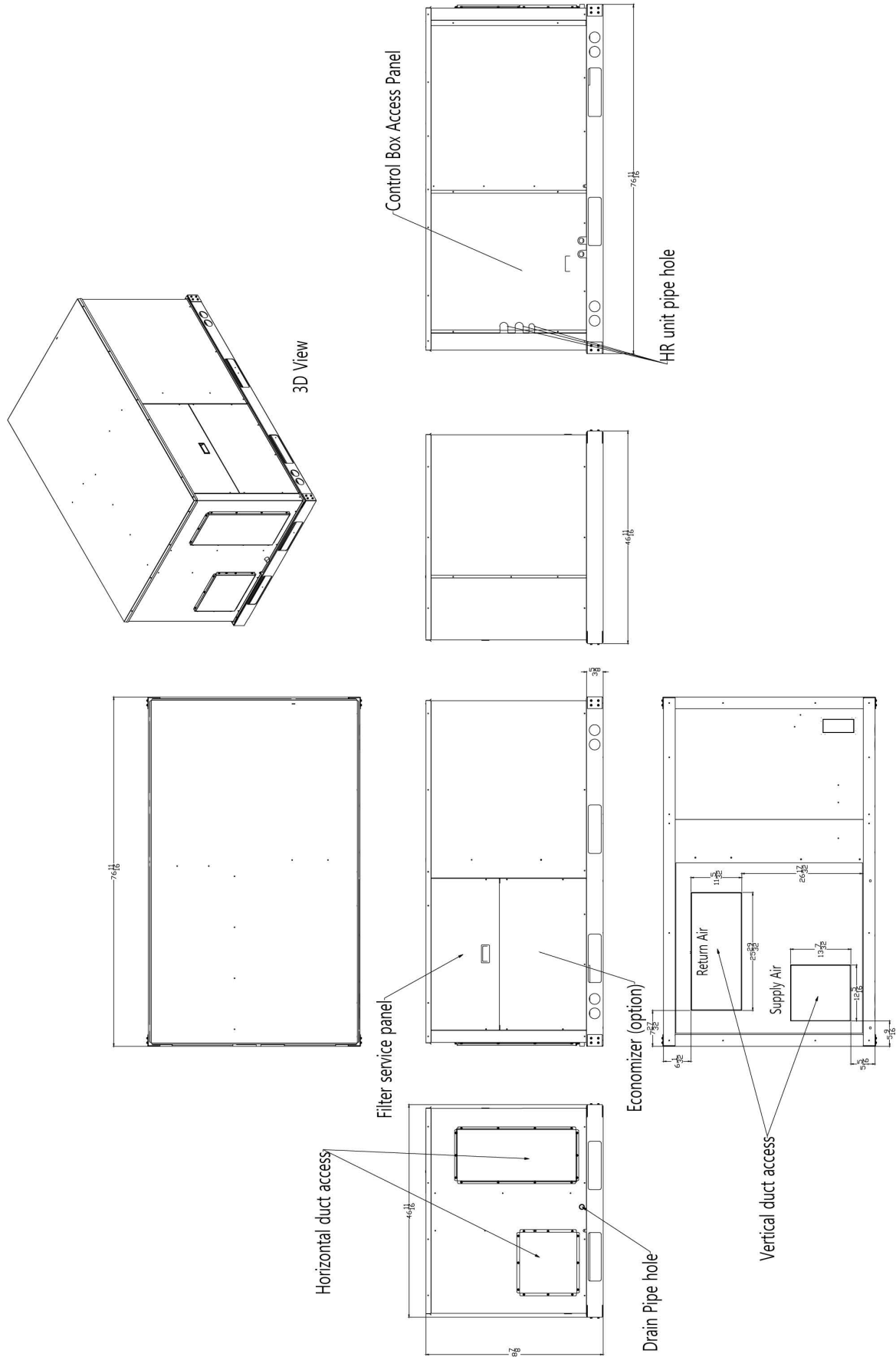
**ARNU723DDA4**  
Multi V™ Split Rooftop Unit  
6 Ton RTU



Tag #:

Date:

PO No.:



For continual product development, LG reserves the right to change specifications without notice.

Job Name/Location:

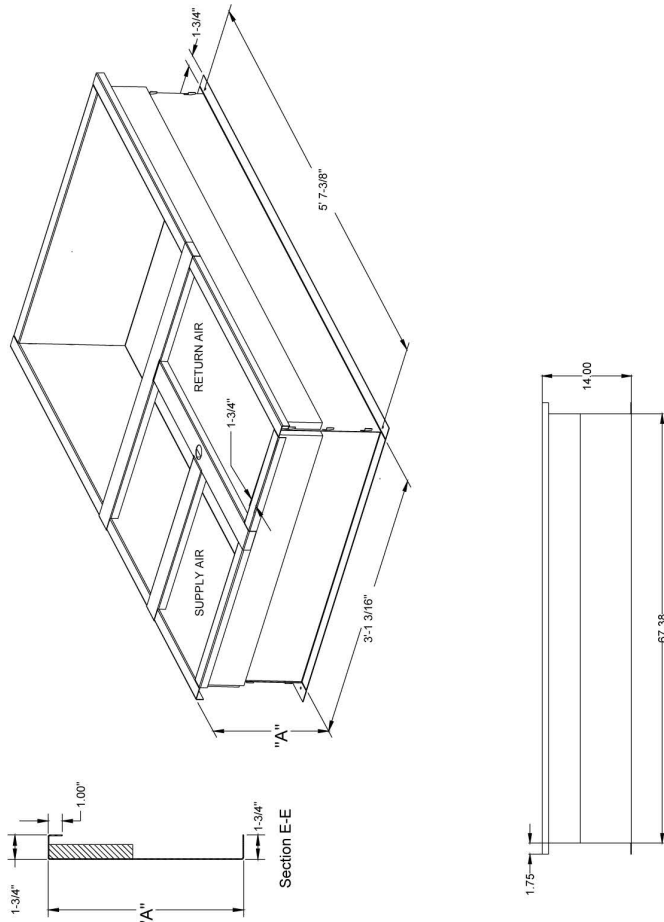
**ARNU723DDA4**  
Multi V™ Split Rooftop Unit  
6 Ton RTU



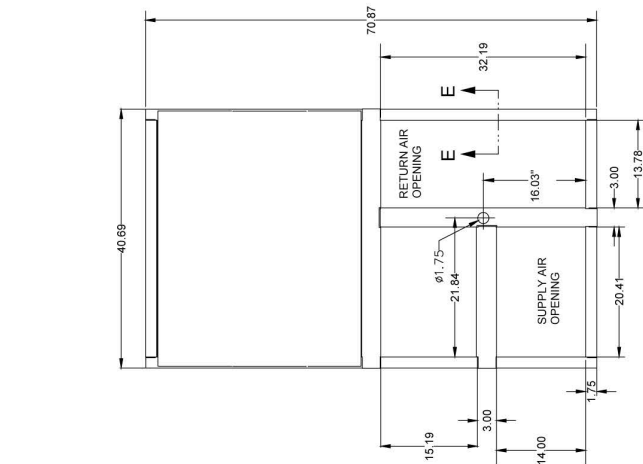
Tag #:

Date:

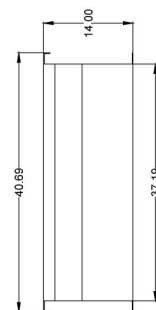
PO No.:



Side View



Top View



End View

Unit = inch